

Heavy metal digestion with aqua regia

Easy and safe with behrotest[®] digestion apparatus



SMA

Heavy metal digestion with aqua regia

With studies on elements of environmental relevance, it is generally not the total content that is of interest but rather their maximum possible release.

That is why many rules for determining element contents in waste specify establishment of the element contents that are soluble in aqua regia or can be extracted:

These rules quote the following procedures:

- EN 13657:2003-01 Characterisation of waste – digestion for subsequent determination of the portion of elements in waste that are soluble in aqua regia
- EN 13346:2001-04 Characterisation of sludges – Determination of trace elements and phosphorus extraction methods with aqua regia



behrotest® apparatus for heavy metal digestion

With behrotest® equipment for heavy metal digestion with aqua regia, the user can be sure of working in compliance with standards and moreover of using a very practical, safe and durable product.

The behrotest® digestion units with external controller and lift offer an extensively programmable digestion process and render time-consuming interventions by the user largely unnecessary.

The classic SMA programme from behr with purely manual operation extends from the compact apparatus for one sample through to the workstation with 12 sampling points. In each case, conical ground joints with large contact surfaces ensure an optimal seal in the glass fuming tract.

The unique behrotest® coolant distribution with parallel supply to all sampling points and practical design of all components guarantees the user analytical reliability and easy handling.

behrotest® SMA digestion units, 8, 12 or 20 sample positions, with external controller and lift

- Stable metal housing
- Sample rack and condenser cassette in non-rusting stainless steel
- Automatic digestion of up to 8, 12 or 20 samples simultaneously
- Programmable
- The sample rack and condenser cassette can be moved up and down independently of each other, making them very easy and safe to operate.
- Easy and safe handling of the samples by separation of the sample rack and condenser cassette
- Easy to programme with the “behr one-button operation”
- Menu navigation also in your language
- External controller

COD - Chemical Oxygen Demand (ISO 6060)

- If the user removes the AS 1 behrotest® absorption vessels, the unit is also suitable for COD digestion. To this end, the unit has the unique COD programme, which guarantees standard-compliant sample digestion in accordance with ISO 6060 etc. (148 °C in the sample vessel, 148 °C is reached within 10 minutes).

behrotest® SMA digestion units

Type	Item description	Order no.
CSB/SMA 8 L	8 sample positions with lift	B00541046
CSB/SMA 12 L	12 sample positions with lift	B00606544
CSB/SMA 20 L	20 sample positions with lift	B00657448

behrotest® SR 6 digestion glass

Digestion glass with round base and round ground joint for use in behrotest® digestion units CSB/SMA 8 L, CSB/SMA 12 L and CSB/SMA 20 L

Type	Order no.
SR 6	B00540934



CSB/SMA 12 L



SR 6



AS 1

Compact system

behrotest® RFK 6 ball return condenser

Ball return condenser with round ground joint for use in behrotest® digestion units CSB/SMA 8 L, CSB/SMA 12 L and CSB/SMA 20 L

Type	Order no.
RFK 6	B00540933

behrotest® AS 1 absorption vessel

Absorption vessel for heavy metal digestion with aqua regia, suitable for ball return condensers SFK 50 and RFK 6

Type	Order no.
AS 1	B00217964

behrotest® compact apparatus for heavy metal digestion with aqua regia

Complete compact system for heavy metal digestion with aqua regia, with base frame, heating device, mounting, hoses and glass apparatus.

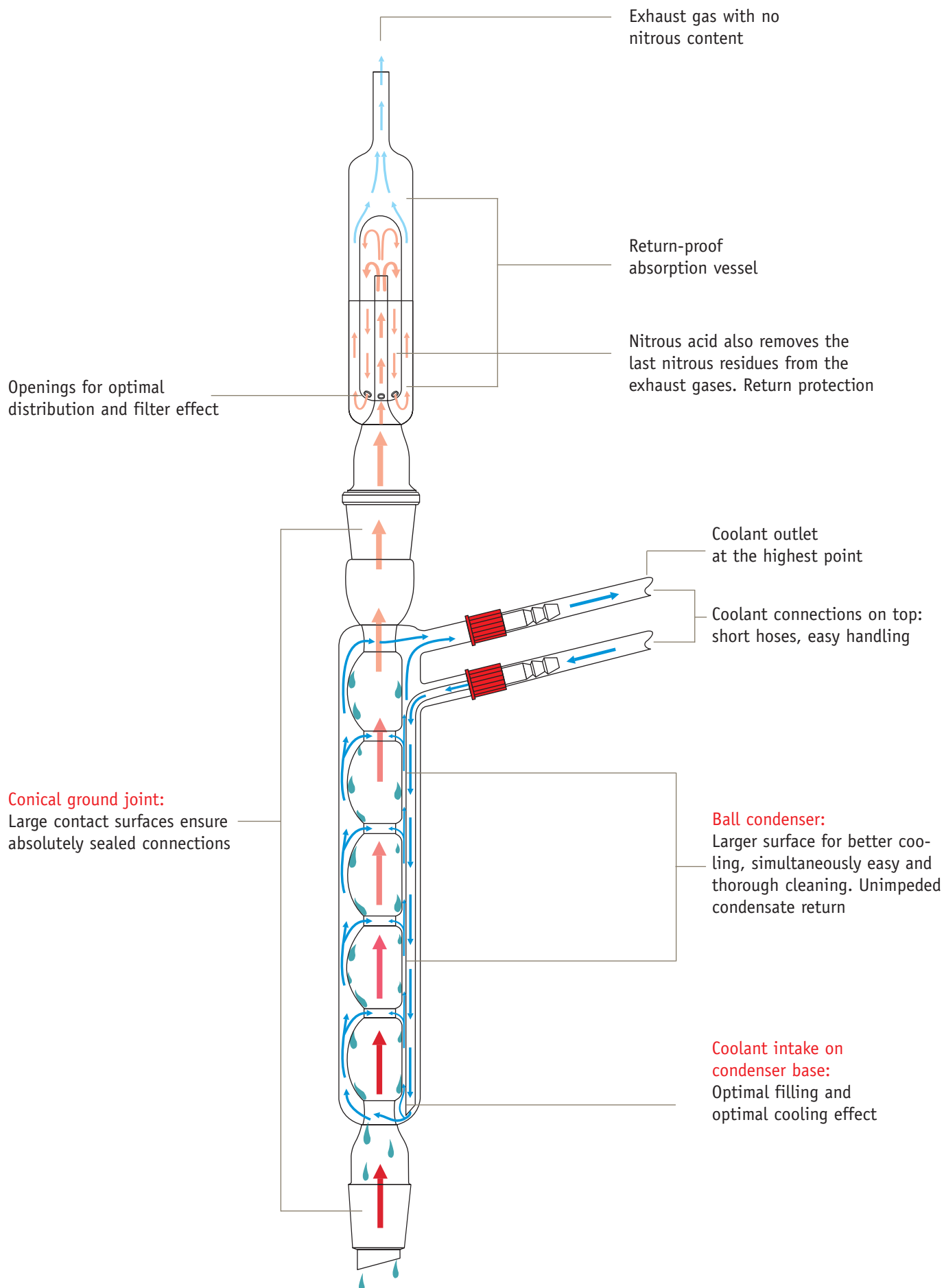
KSMA technical data:

Voltage	230 VAC
Frequency	50/60 Hz
Current consumption	3 A
Power consumption	450 W
Weight	approx. 6.0 kg
Dimensions in cm (W x D x H)	approx. 23 x 33 x 80

Type	Order no.
KSMA	B00217712



Optimal heavy metal digestion



behrotest® workstations for heavy metal digestion with aqua regia

BASIC



SMA-ARB 6

behrotest® SMA-ARB

The behrotest® SMA-ARB workstations offer the complete basic equipment for heavy metal digestion with aqua regia in 6 or 12 samples simultaneously.

The components

- SMA precision heating block with 6 or 12 sampling points for round-based digestion glasses of Ø 41.8 mm, temperature range 20 to 300°C
- ET 2 external controller, temperature range 20 to 450°C, times adjustable from 10 to 999 minutes or constant heating mode
- 6 or 12 SR 2 round-based digestion glasses, 250 ml, with standard ground joint NS 29 and PVDF vessel ring
- 6 or 12 SFK 50 ball return condensers
- 6 or 12 AS 1 absorption vessels
- SG/B application/attachment frame in non-rusting stainless steel for 6 or 12 reaction vessels
- Base frame with coolant distribution and condenser holder for 6 or 12 sample positions

Technical Data:

	SMA-ARB 6	SMA-ARB 12
Weight:	approx. 30 kg	approx. 39 kg
Dimensions in cm (W x D x H):	approx. 45 x 65 x 100	approx. 45 x 65 x 100

Type	Item description	Order no.
SMA-ARB 6	For heavy metal digestion with aqua regia in a maximum of 6 samples simultaneously. Basic equipment	B00218411
SMA-ARB 12	For heavy metal digestion with aqua regia in a maximum of 12 samples simultaneously. Basic equipment	B00218412



SMA-ARB 12

behrotest® SMA-ARM

The behrotest® SMA-ARM workstation is equipped with a programmable, microprocessor-governed controller and a hood to collect the nitrous gases. For the user, this means greater ease of use and functionality in the everyday life of a laboratory.

As SMA-ARB 12 but

- TRS 300 external microprocessor-governed temperature and time control unit instead of the ET 2 controller, temperature range 20 to 399°C, times adjustable from 1 to 999 minutes, comparison of target and actual temperature/time during digestion, up to 10 freely programmable temperature-time levels prevent foaming of samples.

Plus

- PTFE sleeves for glass components
- SG/B application/attachment frame in non-rusting stainless steel for 12 reaction vessels
- TS transport stand for sample preparation and sample transport
- Base frame with coolant distribution and condenser holder for 12 sample positions
- AH 12-SMA hood to collect the nitrous gases from 12 samples with connection option for suitable extraction and cleaning equipment (e.g. behrosog 3)

COD - Chemical Oxygen Demand (ISO 6060)

- If the user removes the AS 1 behrotest® absorption vessels, the unit is also suitable for COD digestion. To this end, the unit has the unique COD programme, which guarantees standard-compliant sample digestion in accordance with ISO 6060 etc. (148 °C in the sample vessel, 148 °C is reached within 10 minutes).

Technical Data SMA-ARM 12:

Weight:	approx. 44 kg
Dimensions in cm (W x D x H):	approx. 45 x 65 x 100



Type	Item description	Order no.
SMA-ARM 12	for heavy metal digestion with aqua regia in a maximum of 12 samples simultaneously. Microprocessor-governed controller	B00218414



COMFORT

Temperature and time controllers for heavy metal digestion

BASIC

behrotest® ET 2 temperature and time controller

Controller for behrotest® precision heating blocks

Connection of consumers up to 2200 W via an integrated appliance socket. Temperature of 20... 450 °C digitally adjustable with a membrane keypad. PID controller with anti-drift controller. Time adjustable at 1... 999 minutes or constant heating.

Technical Data ET 2

External dimensions in cm (W x H x D)	approx. 14.0 x 10.0 x 27.0 with fold-out front feet approx. 14.0 x 13.5 x 27.0
Weight	approx. 1.7 kg
Voltage	220 V/50 Hz, max. 2200 W
Switching capacity	max. 2200 W resistive load
Connection of heating devices	Power supply socket on the back of the device (four-pole special plug with screw closer)
Measuring sensor	PT 100 – three-wire circuit, connection via three-pole diode plug with screw connection
Control performance	PID with anti-drift controller
Temperature control range	20 – 450 °C, digitally adjustable in stages of 1 °C
Control accuracy	±1 K
Time adjustment range	1 – 999 min, digitally adjustable with no limit in stages of 1 min (constant heating)



Type	Item description	Order no.
ET 2	Temperature and time controller, microprocessor-governed	B00217814

ET 2



Programmable TRS 300 temperature and time controller

Programmable controller for behrotest® precision heating blocks

behrr one-button operation for very easy and quick programming. Menu navigation in local language. 10 freely configurable programmes for block temperature and digestion time for digestion of samples that are foaming slightly.

The Windows software provided allows the user to transmit application-specific time/temperature profiles bidirectionally between one or more devices (TRS 300) and a PC via the RS232 interface. With the RS232 interface, temperature data can also be transmitted from the device to the PC during operation. The user can save and print them as graphics if required.

Integrated safety functions switch off the connected devices in the event of a short circuit and interruption of the temperature sensor.

Technical Data TRS 300

Dimensions in cm (W × D × H) Unit height with handle	approx. 15.0 × 17.5 × 32.0 Stand and carrying handle can be locked in place in 30° increments
Weight	approx. 3.2 kg
Voltage	220 V/50 Hz
Switching capacity	max. 2200 W ohmic load
Connection of heaters	Power supply socket on back of unit (4-pole special plug with screw coupling)
Sensor	PT 100 – three-wire circuit, connection via three-pole diode plug
Temperature control range	0 – 450 °C, digitally adjustable
Zeiteinstellbereich	1 – 999 min, digitally adjustable
Programs	11 (with default COD program)
Display	LCD

Type	Item description	Order no.
TRS 300	Temperature and time controller, microprocessor-controlled unit, option of programming up to 10 temperature-time profiles	B00217820



TRS 300



COMFORT



Precision heating blocks and accessories for heavy metal digestion



SMA 6



SMA 12

behtest® SMA precision heating blocks for heavy metal digestion with 6 or 12 sample positions

- Panel heating for very even temperature distribution to all sample positions
- Housing in powder-coated steel and non-rusting stainless steel
- The extensive insulation of the heating block ensures harmless temperatures on the surface of the housing.

Technical Data:

	SMA 6	SMA 12
Sample positions:	6	12
Maximum temperature:	299 °C	299 °C
Power consumption:	800 W	1500 W

Type	Item description	Order no.
SMA 6	Precision heating block thermostat for 6 reaction vessels, 20... 299 °C	B00217838
SMA 12	Precision heating block thermostat for 12 reaction vessels, 20... 299 °C	B00217840

behrotest® SG 6/B and SG 12/B application/attachment frames

behrotest® application/attachment frames with 6 or 12 sample positions, suitable for the SMA precision heating blocks for heavy metal digestion

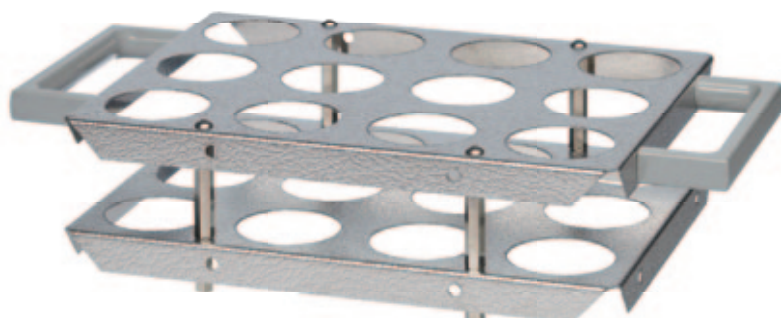
The behrotest® SG 6 B und SG 12 B application/attachment frames are made of non-rusting stainless steel.

They offer safe holding of the behrotest® reaction vessels of type SR and allow safe insertion of the samples into the behrotest® SMA precision heating blocks for heavy metal digestion. The application/attachment frames ensure safe sample handling – the user does not come into contact with the reaction vessels – and allow transport of the samples in the TS transport stand.

Type	Item description	Order no.
SG 6/B	behrotest application/attachment frame for 6 vessels in the SMA block	B00218006
SG 12/B	behrotest application/attachment frame for 12 vessels in the SMA block	B00218008



SG 6 B



SG 12 B

behrotest® TS 12/SM transport stand

Stand for safe transport of the SR reaction vessels into the SG application/attachment frames

Type	Item description	Order no.
TS 12/SM	Transport stand for SG 6 B and SG 12 B application frames	B00217999



TS 12 SM

SMA

Parallel supply to the individual condensers through coolant distribution



An easily removable plastic tub in the support panel



behrotest® coolant distributions

behrotest® coolant distributions KV 6-SMA and KV 12-SMA are made of corrosion-resistant, powder-coated stainless steel.

They offer the user the following advantages in the everyday life of a laboratory:

- In contrast with series supply to several condensers connected in series, parallel supply to the individual condensers with the behrotest® coolant distribution ensures absolutely even cooling in all sample positions.
- The stable base plate ensures safe positioning of the behrotest® precision heating block.
- After digestion, the condensers find safe positioning in the practical support panel, and the user has unimpeded access to the samples.
- Plastic holders in the support panel protect the condenser bases from breaks and splintering.
- An easily removable plastic tub in the support panel catches any condensate that drips from the condensers.

Type	Item description	Order no.
KV 6-SMA	behrotest® coolant distribution for precision heating block SMA 6	B00619618
KV 12-SMA	behrotest® coolant distribution for precision heating block SMA 12	B00619621



KV 12-SMA

behrotest® extraction hood AH 6-SMA

Type	Item description	Order no.
AH 6-SMA	behrotest® PVC extraction to collect the nitrous gases for KV 6-SMA	B00645376



AH 6-SMA

behrotest® extraction hood AH 12-SMA

Type	Item description	Order no.
AH 12-SMA	behrotest® PVC extraction to collect the nitrous gases for KV 12-SMA	B00645377



AH 12-SMA

SMA

behrotest® SR 2 digestion glass

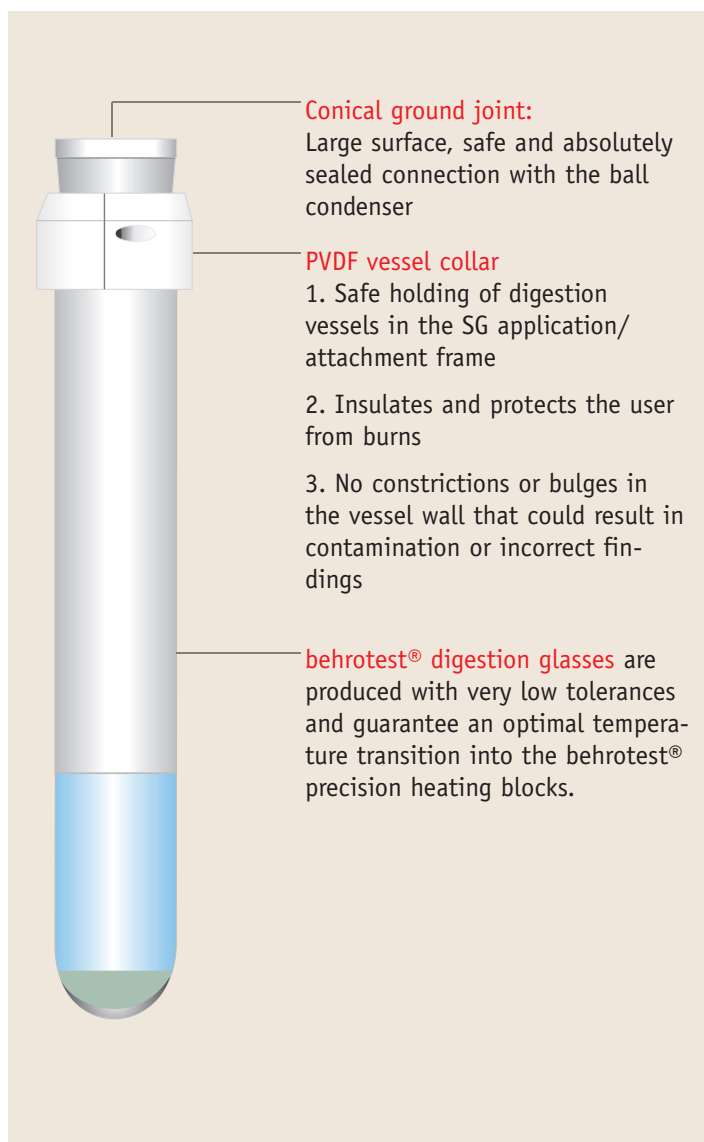
Digestion glass with round base and conical ground joint for use in behrotest® SMA precision heating blocks SMA 6 and SMA 12

A PVDF vessel ring ensures safe holding in the SG application/ attachment frame and protects the user from burns.

behrotest® digestion glasses are produced with very low tolerances and guarantee an optimal temperature transition into the behrotest® precision heating blocks.

Type	Order no.
SR 2	B00217946

behrotest® SR 2 digestion glass:



behrotest® SFK 50 ball condenser

Ball return condenser with conical ground joint for use in behrotest® SMA precision heating blocks SMA 6 and SMA 12

Type	Order no.
SFK 50	B00217957



SFK 50

behrotest® absorption vessel AS 1

Absorption vessel for heavy metal digestion with aqua regia suitable for ball return condensers SFK 50 and RFK 6

Type	Order no.
AS 1	B00217964



AS 1

behrotest® PTFE sleeves

Type	Item description	Order no.
PTFE 29	PTFE sleeves for RG 2, SR 2 and SR 2 Q, set for 12 pieces	B00217905

Use of the PTFE sleeve



USEFUL INFORMATION:

If you operate a KSMA or SMA-ARB workstation with no AS 1 absorption vessel, you have a reflux distillation apparatus that can be used universally.



behr Labor-Technik GmbH • Spangerstraße 8 • 40599 Düsseldorf/ Germany
Tel.: (+49) (0) 211-7 48 47 17 • Fax: (+49) (0) 211-7 48 47 48
eMail: info@behr-labor.com • Internet: www.behr-labor.com

Subject to technical changes and errors.

